



特点

- * 外形尺寸: 110.0 × 50.0 × 25.0 mm
- * 高隔离电压
- * 固定开关频率
- * 六面金属封装

Features

- * Size: 4.33 × 1.97 × 0.98 inch
- * High Isolation Voltage
- * Constant Frequency
- * Encapsulated in Metal Cases

输入特性 (Input)

注释 (Notes and Conditions)

输入电压范围 (Input Voltage Range)	160~265Vac	265Vac Max
输入频率 (Input Frequency)	40~60Hz	

输出特性 (Output)

注释 (Notes and Conditions)

输出电压精度 (Voltage Set-Point Accuracy)	± 2%	V _{inom} and I _{nom}
输出电压调节范围 (Voltage Trim Range)	± 10%	
源效应 (Line Regulation)	± 0.2%V _o	V _{imin} ~V _{imax} , I _{nom}
负载效应 (Load Regulation)	± 0.5%V _o	10%~100%I _{nom} , V _{inom}
短路保护 (Short-Circuit Protection)	连续可恢复 (Continuous, Automatic Recovery)	
瞬态响应 (Dynamic Response)		
过冲幅度 (Peak Deviation)	± 5%V _o	25%-50%-25% of I _{nom}
恢复时间 (Settling Time)	500 μs	and 50%-75%-50% of I _{nom}

一般特性 (General)

注释 (Notes and Conditions)

温度系数 (Temperature Coefficient)	± 0.02%/°C	
隔离电压 (Isolation Voltage)		
输入与输出 (Input-Output)	2500Vdc 1min	
输入与外壳 (Input-Case)	2500Vdc 1min	
输出与外壳 (Output-Case)	700Vdc 1min	
工作温度 (Operating Temperature)	- 20°C ~ + 55°C	Ambient Temperature
贮存温度 (Storage Temperature)	- 40°C ~ + 85°C	
冷却方式 (Cooling)	自然冷却 (Natural Convection)	
相对湿度 (Relative Humidity)	≤ 90%RH, (40 ± 2)°C	
平均故障间隔时间 (MTBF)	2 × 10 ⁵ h	MIL-HDBK-217

注: 除非另有说明, 指标一般在标称输入电压、满载和 25°C 环境温度下测得。

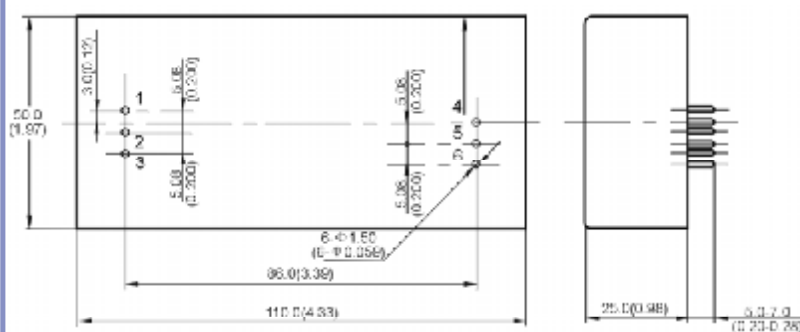
Note: All specifications are typical at nominal input, full load at 25°C unless otherwise stated.

型号列表 (Models)

产品型号 (Model Number)	标称输入电压 (Input Voltage) Vac	标称输出电压 (Output Voltage) Vdc	标称负载 (Output Current) Adc	额定输出功率 (Output Power) W	效率 (Efficiency) %	输出杂音电压峰值 (Ripple and Noise) mVp-p
TP-30JS05	220	5.0	6.0	30	78	50
TP-30JS12	220	12.0	2.5	30	80	120
TP-30JS15	220	15.0	2.0	30	80	150
TP-30JS24	220	24.0	1.2	30	80	180
TP-30JS28	220	28.0	1.1	30	85	120

安装尺寸 (Mechanical Drawing)

尺寸单位是 mm(inches); All Dimensions in mm (inches)

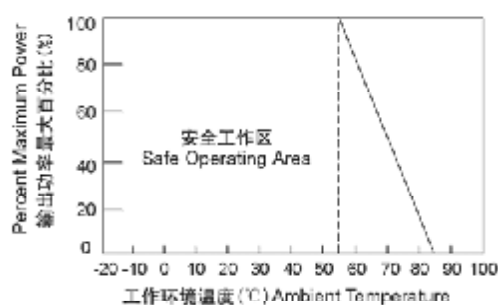
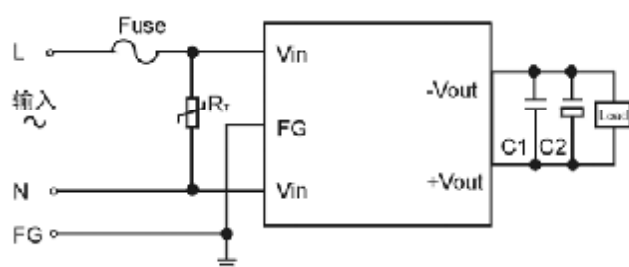


引脚 (Pin)	单路 (Single)
1	FG
2	Vin
3	Vin
4	ADJ
5	-Vout
6	+Vout

mm	inches
.x ± 0.5	.xx ± 0.02
.xx ± 0.13	.xxx ± 0.005

应用电路推荐 (Recommended Application Circuit)

温度降额曲线 (Temperature Derating Curve)



- L: 火线 (Live Wire)
- N: 零线 (Neutral Line)
- C1 为高频瓷片电容或聚酯电容
C1 is High Frequency Ceramic Capacitor or Polyester Capacitor
- C2 为铝电解电容
C2 is Aluminum Electrolytic Capacitor
- R_r 为压敏电阻
R_r: Varistor