



## 特点

- \* 外形尺寸: 50.8 × 40.6 × 12.7 mm
- \* 4: 1 电压输入范围
- \* 固定开关频率
- \* 铝壳封装

## Features

- \* Small Size: 2.00 × 1.60 × 0.50 inch
- \* 4: 1 Input Voltage Range
- \* Constant Frequency
- \* Encapsulated in Aluminium Cases

### 输入特性 (Input)

注释 (Notes and Conditions)

输入电压范围 (Input Voltage Range)			
标称 (Nominal)	48Vdc	18~75Vdc	80Vdc Max
输入过压保护 (Input Overvoltage Protection)		>Vimax	
输入欠压保护 (Input Undervoltage Protection)		<Vimin	
遥控功能 (Remote On/Off Function)			
正逻辑 (Positive Logic)	开启 (On)	≥ 2V 或悬空 (Open Circuit)	相对于 -Vin (Reference to -Vin)
	关闭 (Off)	≤ 0.4V (Connect to -Vin)	

### 输出特性 (Output)

注释 (Notes and Conditions)

输出电压精度 (Voltage Set-Point Accuracy)	± 1%	Vinom and Ionom
源效应 (Line Regulation)	Vo1: ± 0.2%Vo (Vo2: ± 1%Vo)	Vimin~Vimax, Ionom
负载效应 (Load Regulation)	Vo1: ± 0.5%Vo (Vo2: ± 5%Vo)	10%~100%Ionom, Vinom
瞬态响应 (Dynamic Response)		
过冲幅度 (Peak Deviation)	± 5%Vo	25%-50%-25% of Ionom
恢复时间 (Settling Time)	200 μs	and 50%-75%-50% of Ionom
输出过压保护 (Output Overvoltage Protection)	箝位 (Clamp Type)	
输出过流保护点 (Current Limit Threshold Range)	110%~150%Io	
输出电压调节范围 (Voltage Trim Range)	± 10%	
短路保护 (Short-Circuit Protection)	连续可恢复 (Continuous, Automatic Recovery)	

### 一般特性 (General)

注释 (Notes and Conditions)

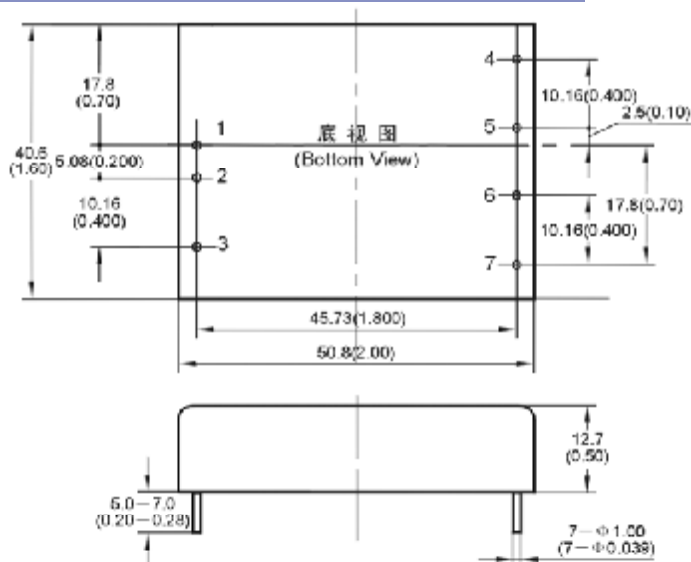
温度系数 (Temperature Coefficient)	± 0.02%/°C	
隔离电压 (Isolation Voltage)		
输入与输出 (Input-Output)	1500Vdc 1min	
输入与外壳 (Input-Case)	1500Vdc 1min	
输出与外壳 (Output-Case)	1500Vdc 1min	
工作温度 (Operating Temperature)	- 40°C ~ + 85°C	
贮存温度 (Storage Temperature)	- 55°C ~ + 125°C	
冷却方式 (Cooling)	自然冷却 (Natural Convection)	
平均故障间隔时间 (MTBF)	2 × 10 <sup>5</sup> h	MIL-HDBK-217
重量 (Weight)	60g	

## 型号列表 (Models)

产品型号 (Model Number)	标称输入电压 (Input Voltage) Vdc	标称输出电压 (Output Voltage) Vdc	标称负载 (Output Current) A	额定输出功率 (Output Power) W	效率 (Efficiency) %	输出杂音电压峰峰值 (Ripple and Noise) mVp-p
SFQ48S3V3-20W	48	3.3	6.00	20	80	75
SFQ48S5-20W	48	5.00	4.00	20	83	75
SFQ48S12-20W	48	12.00	1.67	20	85	100
SFQ48S15-20W	48	15.00	1.33	20	85	100
SFQ48S24-20W	48	24.00	0.83	20	85	100
SFQ48D5-20W	48	± 5.00	2.00	20	83	75
SFQ48D12-20W	48	± 12.00	0.83	20	85	100
SFQ48D15-20W	48	± 15.00	0.66	20	85	100

## 安装尺寸 (Mechanical Drawing)

尺寸单位是 mm(inches); All Dimensions in mm (inches)

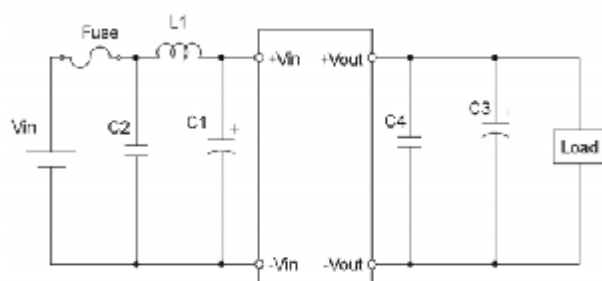


引脚(Pin)	单路(Single)	双路(Dual)
1	+Vin	+Vin
2	-Vin	-Vin
3	Rem	Rem
4	NP	+Vout
5	+Vout	COM
6	-Vout	-Vout
7	Trim	Trim

mm	inches
.x ±0.5	.xx ±0.02
.xx ±0.13	.xxx ±0.005

## 应用电路推荐 (Recommended Application Circuit)

## 温度降额曲线 (Temperature Derating Curve)



注: 除非另有说明, 指标一般在标称输入电压、满载和 25°C 环境温度下测得。

Note: All specifications are typical at nominal input, full load at 25°C unless otherwise stated.