

特点

- * 外形尺寸: 41.9 × 37.1 × 10.7 mm
- * 2: 1 电压输入范围
- * 全开放式结构
- * 基板工作温度 85℃

Features

- * Size: 1.65 × 1.46 × 0.42 inch
- * 2: 1 Input Voltage Range
- * Open Frame Construction
- * 85℃ Baseplate Operation

输入特性(Input)		注释(Notes and Conditions)	
输入电压范围(Input Voltage Range)	36~72Vdc	80Vdc Max	
输入欠压保护(Input Undervoltage Protection)	28~35Vdc	带后缀 F(With Suffix "F")	
遥控功能(Remote On/Off Function)			
正逻辑(Positive Logic)	开启(On): 高电平或悬空 (High Level or Open Circuit)	相对于 -Vin (Reference to -Vin)	
	关闭(Off): 零电平或短路 (Connect to -Vin)		

输出特性(Output)		注释(Notes and Conditions)	
输出电压精度(Voltage Set-Point Accuracy)	± 1%	Vinom and Ionom	
源效应(Line Regulation)	± 0.2%Vo	Vimin~Vimax, Ionom	
负载效应(Load Regulation)	± 0.5%Vo	10%~100%Ionom, Vinom	
输出过流保护点(Current Limit Threshold Range)	120%~150%Io		
短路保护(Short-Circuit Protection)	连续可恢复 (Continuous, Automatic Recovery)		
瞬态响应(Dynamic Response)			
过冲幅度(Peak Deviation)	± 5%Vo	25%-50%-25% of Ionom	
恢复时间(Settling Time)	200 μs	and 50%-75%-50% of Ionom	

一般特性(General)		注释(Notes and Conditions)	
温度系数(Temperature Coefficient)	± 0.03%/℃		
隔离电压(Isolation Voltage)			
输入与输出(Input-Output)	1000Vdc or 700Vac 1min		
输入与外壳(Input-Case)	1000Vdc or 700Vac 1min		
输出与外壳(Output-Case)	1000Vdc 1min		
工作基板壳温(Operating Baseplate Temperature)	- 25℃ ~ + 85℃		
贮存温度(Storage Temperature)	- 55℃ ~ + 125℃		
冷却方式(Cooling)	自然冷却(Natural Convection)		
平均故障间隔时间(MTBF)	2 × 10 ⁵ h	MIL-HDBK-217	

注: 除非另有说明, 指标一般在标称输入电压、满载和 25℃ 基板温度下测得。

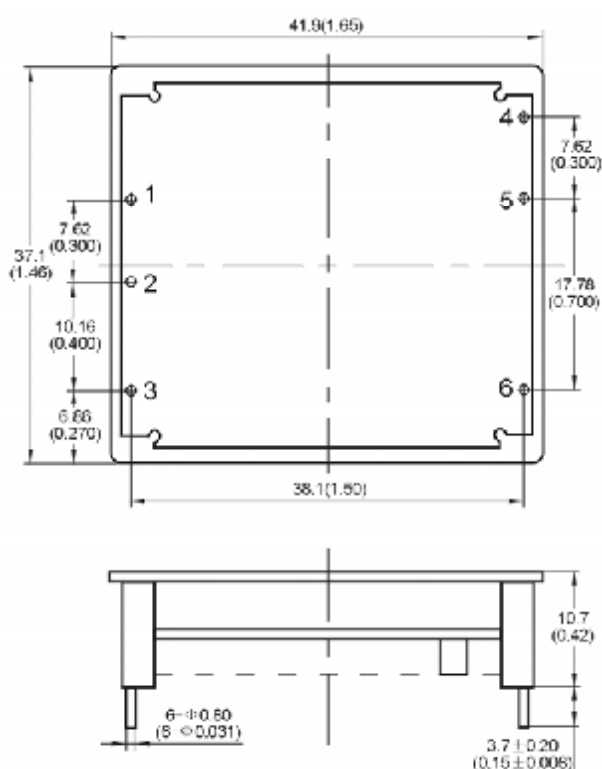
Note: All specifications are typical at nominal input, full load at 25℃ baseplate temperature unless otherwise stated.

型号列表 (Models)

产品型号 (Model Number)	标称输入电压 (Input Voltage) V	标称输出电压 (Output Voltage) V	标称负载 (Output Current) A	额定输出功率 (Output Power) W	效率 (Efficiency) %	输出杂音电压峰值 (Ripple and Noise) mVp-p
SFA48S3V3-15W	48	3.3	3	10	80	50
SFA48S5-15W	48	5	3	15	80	50
SFA48S12-15W	48	12	1.25	15	82	100

安装尺寸 (Mechanical Drawing)

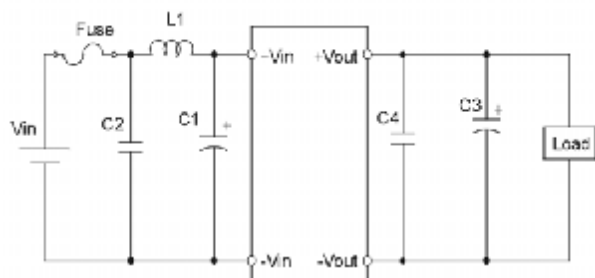
尺寸单位是 mm(inches); All Dimensions in mm (inches)



引脚定义 (Pin Definition)	
引脚 (Pin)	单路 (Single)
1	+Vin
2	-Vin
3	Rem
4	-Vout
5	+Vout
6	N C

未注公差按下表 (Tolerances Unless Otherwise Specified)	
mm	inches
.x ±0.5	.xx ±0.02
.xx ±0.13	.xxx ±0.005

应用电路推荐 (Recommended Application Circuit)



温度降额曲线 (Temperature Derating Curve)

